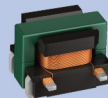
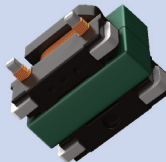
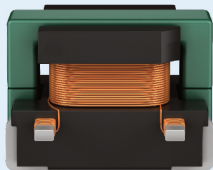


EPCOS Sample Kit 2020

SMT Current Sense Transformers

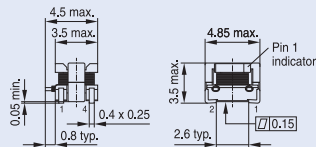
EE 4.2 Core Series – B82801A1



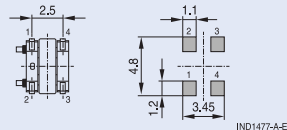
Current Sense Transformers - EE 4.2 Core (SMT)

Turns ratio	Np : Ns	1 : 20	1 : 30	1 : 40	1 : 50	1 : 60
L_{\min}	μH	33	74	132	205	295
Voltage-time product	$\text{V} \cdot \mu\text{s}$	5.76	8.6	11.5	14.4	17.3
Ordering code	B82801	A1333A020	A1743A030	A1134A040	A1214A050	A1304A060
Turns ratio	Np : Ns	1 : 70	1 : 100	1 : 125	1 : 150	
L_{\min}	μH	400	820	1280	1840	
Voltage-time product	$\text{V} \cdot \mu\text{s}$	20.0	28.8	36.0	43.2	
Ordering code	B82801	A1404A070	A1824A100	A1135A125	A1185A150	

- All values measured at +25 °C ambient temperature
- Frequency range: 50 kHz ... 1 MHz
- Sensed current: The max. primary current of 7 A causes approx. +40 °C temperature rise
- Operating temperature range: -40 °C ... +125 °C
- Tape and reel packing: 16 mm blister tape, 178 mm reel
- Packing units: 600 pcs./reel; 3000 pcs./carton



Recommended PCB layout
(Top View)



IND1477-A-E